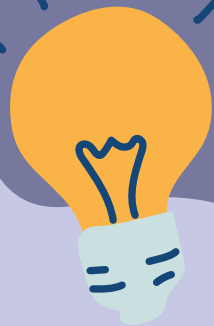


Think International Educational Services Limited



Fun & Creative



English Playgroup

Age: 12-36 Months



Join our Trial Class

Think International Educational Services Limited



English Playgroup (January – February 2025) (Revised)



Ma On Shan Campus

Attending playgroups is the steppingstone for a successful school life. Your child will meet new friends and develop new skills through listening to and singing musical rhymes, making art, and engaging in language activities with our native-speaking English teachers.

	Class	Dates	Fee
19-30 months	MOS01 – Saturday 9:00a.m.-10:30a.m.**	Jan 11 Feb 8, 15, 22 *No class on Jan 4, 18, 25 & Feb 1	\$300/lesson Total: \$1,200 (4 sessions)
19-30 months	MOS02 – Saturday 9:45a.m.-11:15a.m.*		
12-18 months	MOS03 – Saturday 11:00a.m.-12:30p.m.*		
12-24 months	MOS04a – Tuesday 3:30-5:00p.m.*	Jan 7, 14, 21 Feb 11, 18, 25 *No class on Jan 28 & Feb 4	\$200/lesson Total: 1,200 (6 sessions)
	MOS04b – Wednesday 3:30-5:00p.m.*	Jan 8, 15, 22 Feb 12, 19, 26 *No class on Jan 1 & 29, Feb 5	
	MOS04c – Thursday 3:30-5:00p.m.*	Jan 9, 16, 23 Feb 13, 20, 27 *No class on Jan 2 & 30, Feb 6	

*The first half-hour is for children's Free Play; the subsequent hour is for Planned Activities.
 **The first hour is for Planned Activities; the subsequent half hour is for children's Free Play.
 #Limited enrollment. Subject to availability.

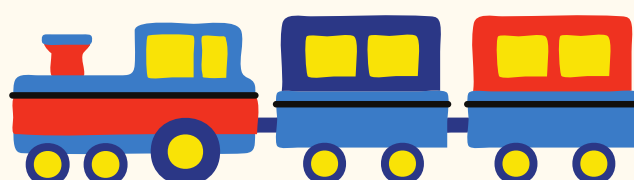
- Notes.
- All fees paid are non-refundable. There are no make-up classes or refund for absentees.
 - Each child must be accompanied by one adult only.
 - When Tropical Cyclone Warning Signal No. 3 or above, or when Red or Black Rainstorm Warning Signal is hoisted, classes will be cancelled; and make-up classes will be scheduled on a later date.
 - If the Red or Black Rainstorm Warning Signal is issued while kindergarten is in session, playgroup children will continue their session until normal dismissal time.
 - #Limited enrollment. Subject to availability.

Learning Contents

<p>12-18 months</p>	<ul style="list-style-type: none">·Language exposure: simple words and phrases related to theme topic·Language (listening and speaking): words and phrases related to theme topic·Concepts: size (big/small), direction (up/down), numbers (counting), shapes (circle, triangle, square, rectangle), volume (loud/soft), length (long/short), sameness, speed and tempo (fast/slow)·Social skills: sharing (with support), turn-taking, greeting others·Sensorial development: colors, sense of touch (hard/soft), sense of touch (round/pointy)·Sensory play related to theme topic
<p>19-30 months</p>	<ul style="list-style-type: none">·Language (listening and speaking): words and phrases related to theme topic·Concepts: a pair, size sequence (big/small), numbers (counting), shapes (oval/circle), pitch (high/low)·Physical skills: making intentional strokes (pre-writing skill), squatting, and getting up·Social skills: greeting others, turn-taking, sharing (with reminders)·Practical life: spooning (transferring objects with a spoon)·Sensorial development: mixing colors, sense of touch (rough/smooth)·Sensory play related to theme topic

Remarks: These are accompanied classes.

All children must be accompanied by ONE adult at all times.





Application Form



Child's Name: _____ (Eng) _____ (Chi)

Gender: M / F

Date of Birth: ____ / ____ / ____

Address: _____

Parents / Guardians' Name: _____

Contact Number #1: _____

Contact Number #2: _____

Email Address: _____

Class: MOS 01 / 02 / 03 / 04a / 04b / 04c
(Circle as appropriate)

Parents / Guardians' Signature: _____ Date: _____

Payment Methods: (Please tick your choice of payment)



Cheque



Submit the completed Application Form in person at the school office with a crossed cheque. Please make the cheque payable to 'Think International Kindergarten o/b Think International Educational Services Ltd.'

Total HK\$ _____

Bank Transfer or FPS



1) Deposit the fee into the school's bank account

Bank of East Asia account number 015-186-68-001187 (Current)

or using the telephone number 57208383 (FPS)

Quote the class number and your child's name as reference e.g., MOS 01 Chan Siu Ming

2) Submit the completed Application Form and pay-in-slip to the school via email.

3) Return the original pay-in-slip to the school before or on the first day of lesson for the office's record.

